

ONLY FROM

**nemco**<sup>®</sup> | FOOD  
EQUIPMENT

## Easy LettuceKutter

Versatility is the name of the game with this powerful, but easy to use, tool that makes quick work of lettuce, chicken, melon and more!



Cuts  
a case of  
cored lettuce  
in less than  
3 minutes!

Buy once. Buy the original.  
**Always look for this mark of quality**





# Iceberg Is Just the Tip

Yes, originally the Easy LettuceKutter was designed to make quick work of the garden salad staple item. But then one Nemco customer after another discovered this handy utility player could tackle all sorts of food-prep cutting jobs.

## Lettuce See What Else It Can Do

With its super-sharp blades and handle design that transfers more power to the pusher block, the Easy LettuceKutter got Nemco customers thinking.

Nemco followed up with a number of modular blade assemblies to simplify all kinds of cutting chores. Now, with one tool, you can cut:

- 1" or 3/4" squares for salad bars
- 1/2" squares for chopped salads
- 1/2" slices for melons
- 3/8" slices for cooked chicken
- 1" x 2" pieces for romaine
- and the ideas keep coming

## The Beauty Is in the Blades

Nemco engineers designed a system that was highly effective, but easy on both the blades and the food.

- Interlocked blades nested in the frame don't suffer from flexing.
- Pretensioned blade assemblies are easy to change out, with little or no blade tensioning required.
- Scalloped blade edges have been added to some assemblies for cleaner cuts and no crushing or bruising—lettuce stays fresh longer with no rusting or browning.

## Easy to Use. Easy to Clean.

Get long-lasting performance for maximum ROI.

- Angled, cast aluminum legs with no-slip feet provide a stable cutting platform, for fast and easy precision cutting with minimal wear on the unit.
- This is the only lettuce cutter on the market that allows the blade and pusher head to come apart for cleaning without tools. Just pull one pin to remove the pusher block, then lift the blade assembly out with ease.
- All stainless steel and aluminum-cast construction.

Handle design uses leverage to amplify the user's strength

Manual locking pin keeps pusher block safely in place until operator releases for cutting

Both the pusher block and blade assembly can be removed for cleaning, without the use of tools



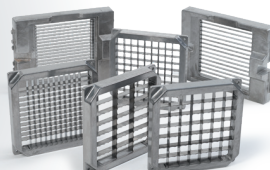
NSF-listed polypropylene cutting board fits over 20- to 32-gallon lettuce-keeper containers.

Model 55491 | Specs: 24" x 24" x 3/4"

Angled legs with rubber non-skid feet provide stability



Precision sharpened stainless-steel blades are nested to avoid flexing



Modular Blade Assemblies

## Suggested Uses

Ideal for chopping iceberg and other lettuces, as well as slicing melon for fruit trays. Also slices lettuce for tacos, subs and other sandwiches. Model 55650-CS can be used to slice cooked chicken for wraps and salads.

## General Specifications

Model	Description
55650	1" x 1" Square
55650-1	1/2" Slices
55650-2	1" x 2" (for Romaine)
55650-3	1/2" x 1/2" Square
55650-4	2" x 2" Square
55650-6	3/4" x 3/4" Square
55650-CS	3/8" Slices

## Optional Accessories

### Blade & Holder Assembly

55485	1" x 1" Square
55495	1/2" Slices
55485-2	1" x 2" (for Romaine)
55924	1/2" x 1/2" Square
55821	2" x 2" Square
55485-6	3/4" x 3/4" Square
55882	3/8" Slices

### Replacement Blade Sets

55470	1" x 1" Square
55521	1/2" Slices
55470-2BR	1" x 2" (for Romaine)
55923	1/2" x 1/2" Square
55822	2" x 2" Square
55470-6	3/4" x 3/4" Square

## Dimensions

Equipment (w x d x h)	13" x 18" x 20"
Shipping Weight	17 lbs

Replacement parts are available through Nemco's 24-hour Zip Program.

Nemco reserves the right to make design, specification or model changes without notice.



**nemco** | FOOD EQUIPMENT

Physical Address: Corporate HQ  
301 Meuse Argonne | Hicksville, OH 43526  
800.782.6761 • 419.542.7751 • f: 419.542.6690

### Mailing Address:

PO Box 305 | Hicksville, OH 43526

Nemco West Distribution Center/Test Kitchen  
4300 E Magnolia Street | Phoenix, AZ 85034

[NemcoFoodEquip.com](http://NemcoFoodEquip.com)



Printed 11/18. Printed in the USA.