

## FEATURES

- Performs well in hot environments
- High grade stainless steel interior & exterior
- Heavy duty marble prep area
- Heavy duty stainless steel top
- All fitted with European parts Compressor & EBM fan motor
- Embraco compressor
- 43-degree ambient working temperature
- Gas 134A refrigerant
- 2-8 degrees working temp
- Insulation foam CH10, ODP zero emissions
- Static cooling system
- Carel Italian digital controls
- Self-evaporating drainage
- Manual defrosting system
- We recommend you defrost regularly for better maintenance of temperatures
- Compressor & condenser situated on the bottom, so motor can breathe
- Unit can be positioned against a wall
- Fits Australian GN pans
- White Epoxy shelves & stainless-steel rails
- Comes installed with 4 castors for easy mobility
- ESL 3831 fits 5x 1/3 GN Pans
- ESL 3832 fits 6 x 1/3 GN Pans
- GN / pans & Lids not included



ESL3831



ESL3832

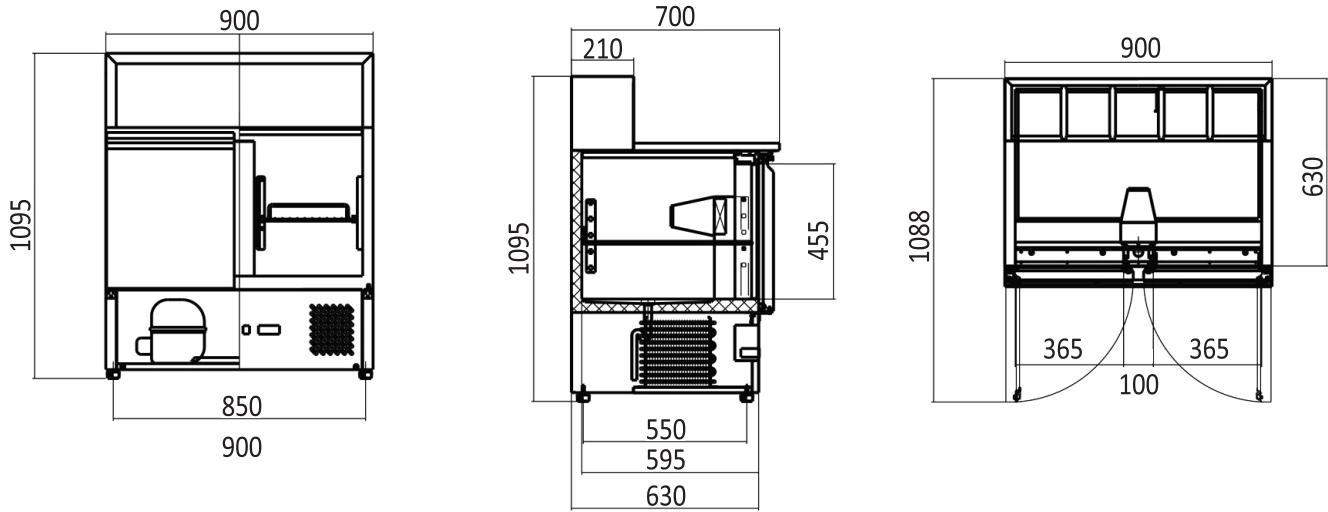


INFORMATION	ESL3831	ESL3832
Capacity	300L	300L
Power	250W	250W
Voltage	220~240V/50Hz	220~240V/50Hz
Working Temp	-2°C~+8°C	-2°C~+8°C
Ambient Temp	43°C	43°C
Dimensions(mm)	W900 x D700 x H1100,92kg	W900 x D700 x H1040,68kg
Packaging Dimensions(mm)	W954 x D754 x H1242,108kg	W954 x D754 x H1172,84kg

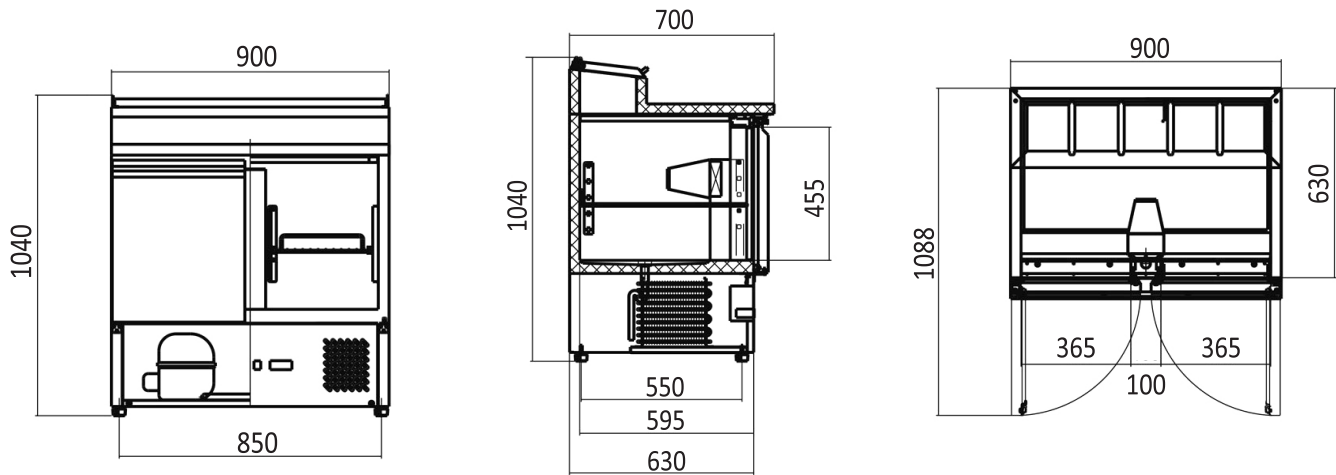


2 YEARS WARRANTY ON ALL PARTS & LABOUR  
 \* EXTRA 2 YEARS WARRANTY ON PARTS WHEN YOU REGISTER WITH US ONLINE

ESL3831



ESL3832



+



2 YEARS WARRANTY ON ALL PARTS & LABOUR  
\* EXTRA 2 YEARS WARRANTY ON PARTS WHEN YOU REGISTER WITH US ONLINE