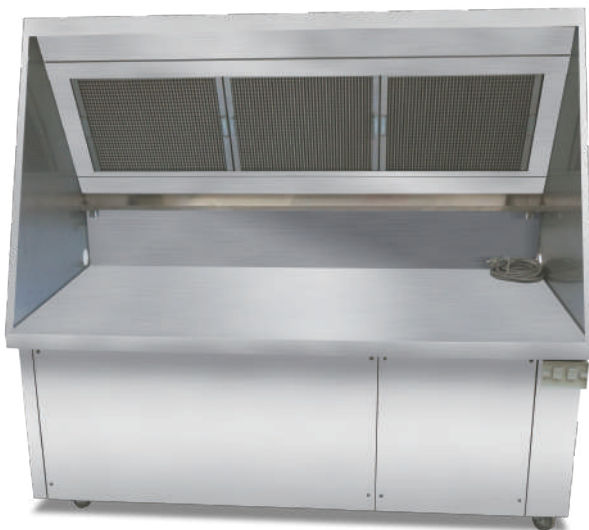


Ductless Exhaust Hood System

FEATURES

- Made for electrical appliances up to 8kw each
- Can handle a 3-phase unit
- Fit up 3 or 4 appliances
- Quiet motor with plenty of (suction power) 400- 500 litres per second
- 334 watt motor only drawing 1.4amp
- Made in 304 stainless steel (for easy cleaning)
- LED lights (for great illumination when cooking)
- Fitted with 3 standard removable honey comb filters 380 x 455 in size
- Fitted with a Polyester Filter (that you change every 8-12 weeks)
- Fitted with a carbon filter (that you change every 12 months)
- Comes standard on heavy duty legs (for a sturdy operation)
- Comes included with heavy duty castors
- Comes with 12 months' warranty Australia wide (parts and labour)
- Full certification included



Ductless Hood

W 1500mm x D 750mm X H 1400mm

W 1500mm x D 850mm X H 1400mm

W 1800mm x D 750mm X H 1400mm

(620mm bench height)

