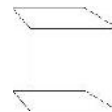


AL8C

Passthrough Warewasher with Heat Recovery
W 905mm x D 760mm x H 2010mm

Wash Chamber
W 700mm
D 540mm
H 650mm



Washtech warewashers are built to improve the efficiency of operations washing oversized and/or heavily soiled items, from bakeries to production kitchens, supermarkets to hospitals. This is achieved with a continuous and consistent wash process throughout the day that is easy on your staff. With highly efficient water consumption rates, they are also light on the environment and operating costs.

The AL8C is a powerful, highly durable, simple-to-use and easy-to-maintain passthrough warewasher. It features Washtech hybrid controls which combine IP67 stainless switches, tried-and-tested switchgear, with a customisable electronic timer. Built with a large wash chamber and counterbalanced passthrough door, the AL8C is ideal for washing bins, crates, bowls and other oversized items. The AL8C also features a highly efficient heat recovery unit which ensures minimal energy consumption and steam emissions, for even lower operating costs and an improved working environment.

Since 1981 Washtech dishwashers have been constructed from heavy-duty stainless steel, and are engineered specifically for Australian conditions and regulations. Backed by the most extensive service network and spare parts inventory in the region, your Washtech AL8C will not let you down.

Special Features

- Suitable for installation without an extraction canopy in many situations
- Integrated heat recovery unit reduces steam emissions and energy consumption and optimises for fast, efficient operation on cold inlet water

Standard Features

- Versatile 2.5, 4.5 and 6.5 minute wash cycles
- Large internal wash chamber with useable area of W 700mm x D 540mm x H 650mm
- Low water consumption of 2.6 litres per cycle
- Washtech hybrid controls
- Easy installation supplied with:
 - Water supply hose
 - Detergent and rinse aid pumps with injector lines
- High powered wash system
- Suitable for connection to low inlet water pressure (break tank and rinse pump fitted)
- Heavy-duty stainless steel construction and wash manifold
- Robust stainless steel wash and rinse arms with precision stainless steel jets
- Double heavy duty stainless steel filtration system including dual scrap trays and separate wash inlet filter
- Wash chamber easily accessible via counter-sprung hood
- Easy loading with inline bench work
- Watermark approved backflow prevention
- Moffat's comprehensive 5-2-1 Warranty

Includes:

- 1 x 500x600mm dish rack (600 70042)
- 1 x 500x600mm cup rack (600 70043)
- 1 x 435mm cup cover (K0452)
- 1 x cutlery basket (C660508)
- 1 x cutlery container (C660503)



AL8C



moffat.com.au
washtech.com.au

Moffat Pty Limited

VIC/TAS/SA
70 Springvale Road
Mulgrave, Victoria 3170
Telephone 03-9518 3888
Fax 03-9518 3833
vsales@moffat.com.au

NSW

Telephone 02-8833 4111
nswsales@moffat.com.au

QLD

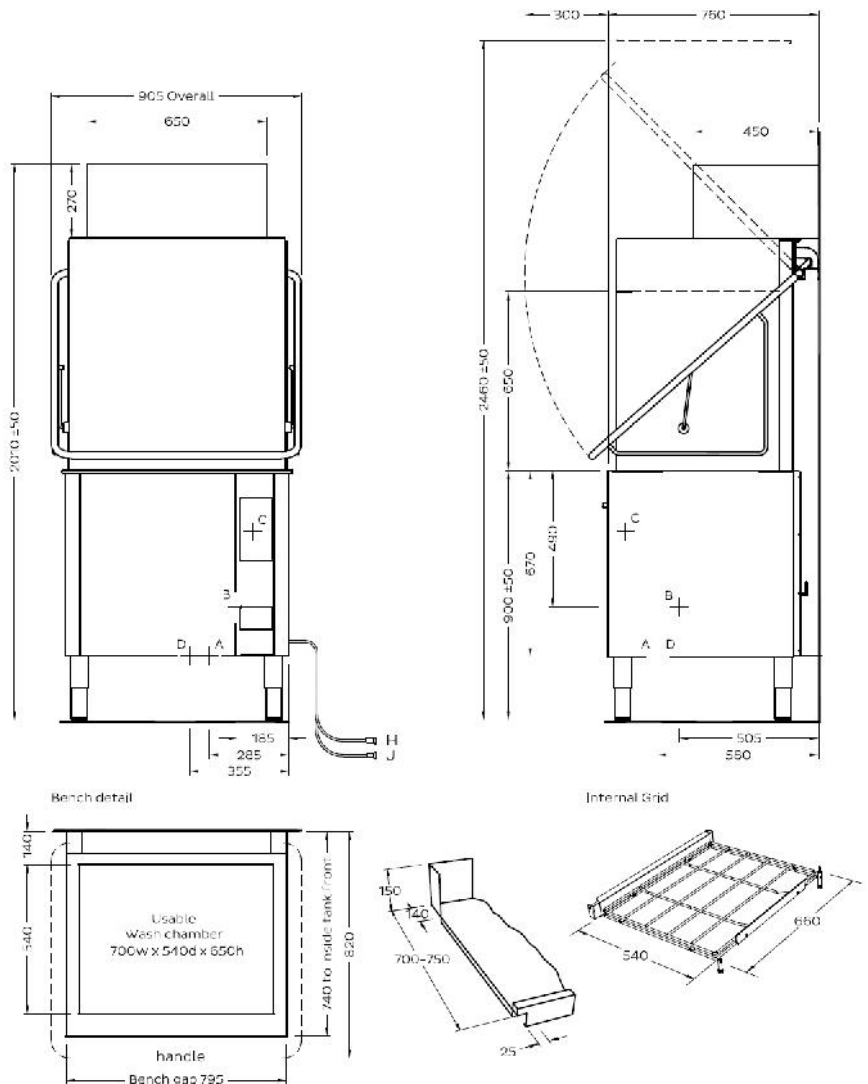
Telephone 07-3630 8600
qldsales@moffat.com.au

WA

Telephone 08-9413 2400
wasales@moffat.com.au

In line with policy to continually develop and improve its products, Washtech reserves the right to change specifications and design without notice.

© Copyright Moffat Ltd
Version: WAL800212409



D – Cold Water

Temperature	<25°C
Connection	3/4" male; hose supplied
Pressure	100-350kPa
Flow	10 litres per min
Quality	Potable - refer table
Backflow Prevention	AVB
Consumption	2.6 litres per cycle

A – Hot Water (fill only)*

Temperature 65°C
 Connection 3/4" male; hose supplied
 Pressure 100-350kPa
 Flow 10 litres per min
 Quality Potable - refer table
 Backflow Prevention AVB

B - Waste

Connection	1.5" BSP male
Line	2.0" / 50mm minimum

C - Electrical	V	Hz	A/phase	Max kW
----------------	---	----	---------	--------

Configuration	V _{LL}	I _{LL}	Hz phase	Max Hz
Three Phase	415	50	25	18.00
Three Phase	415	50	15	10.50

Dimensions

Width (mm)	905	1000
Depth (mm)	760	910
Height (mm)	2010	1970
Weight (kg)	180	203
Volume (m ³)		1.80

Water Quality

pH	7	8
Hardness (ppm)	20	100
Cl ⁻		100
SO ₄ ²⁻		400
Fe		0.1
Mn		0.5
Cu		0.05
Cl ₂		0.1

* Hot water recommended for faster initial heating, can be substituted for additional cold water line.

Suitable for installation without extraction canopy in most instances. Full certification from SEED available on request.

Isolating switch must be within 1m of, and not directly behind the machine.

Refer to operator manual for installation instructions.